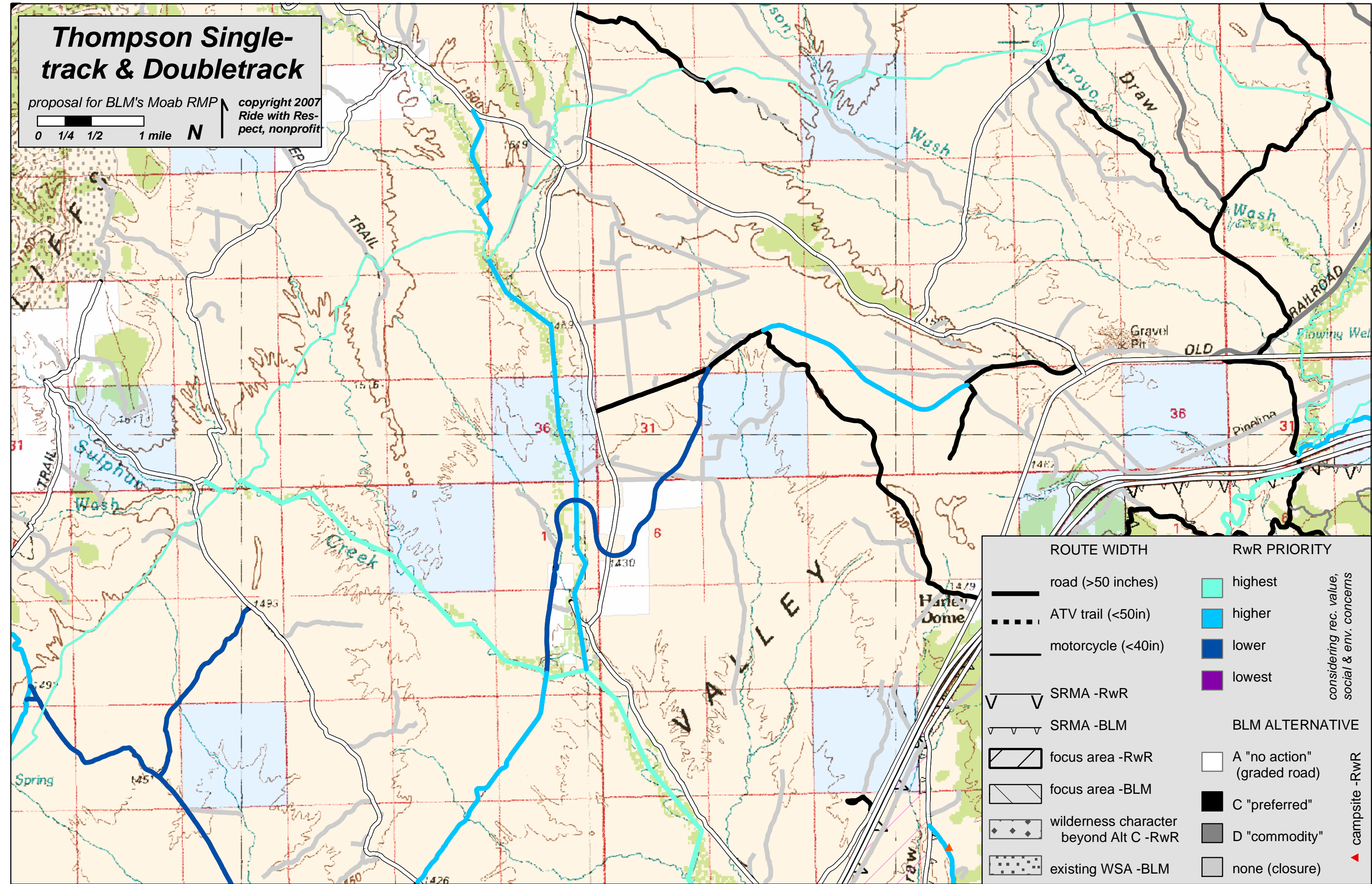
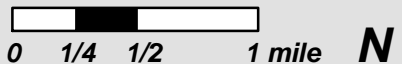


Thompson Single-track & Doubletrack

proposal for BLM's Moab RMP

copyright 2007
Ride with Respect, nonprofit



ROUTE WIDTH		RwR PRIORITY	
	road (>50 inches)		highest
	ATV trail (<50in)		higher
	motorcycle (<40in)		lower
			lowest
	SRMA -RwR		
	SRMA -BLM		
	focus area -RwR		
	focus area -BLM		
	wilderness character beyond Alt C -RwR		
	existing WSA -BLM		
	A "no action" (graded road)		
	C "preferred"		
	D "commodity"		
	none (closure)		
	campsite -RwR		

considering rec. value, social & env. concerns